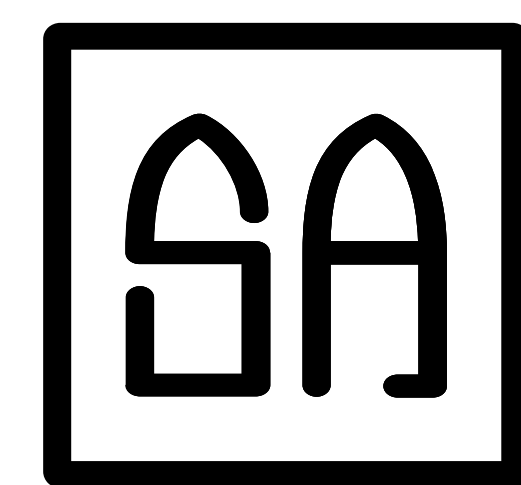


GUIDE.



SPECNA[®]
ARMS



ZOMBIE
HUNTER

SPECNA ARMS INDUSTRIES
SEMI
AUTO SAFE



CAGE: 68407
PART# 48672380
SERIAL# SA2689

SPECNA ARMS

WELCOME!

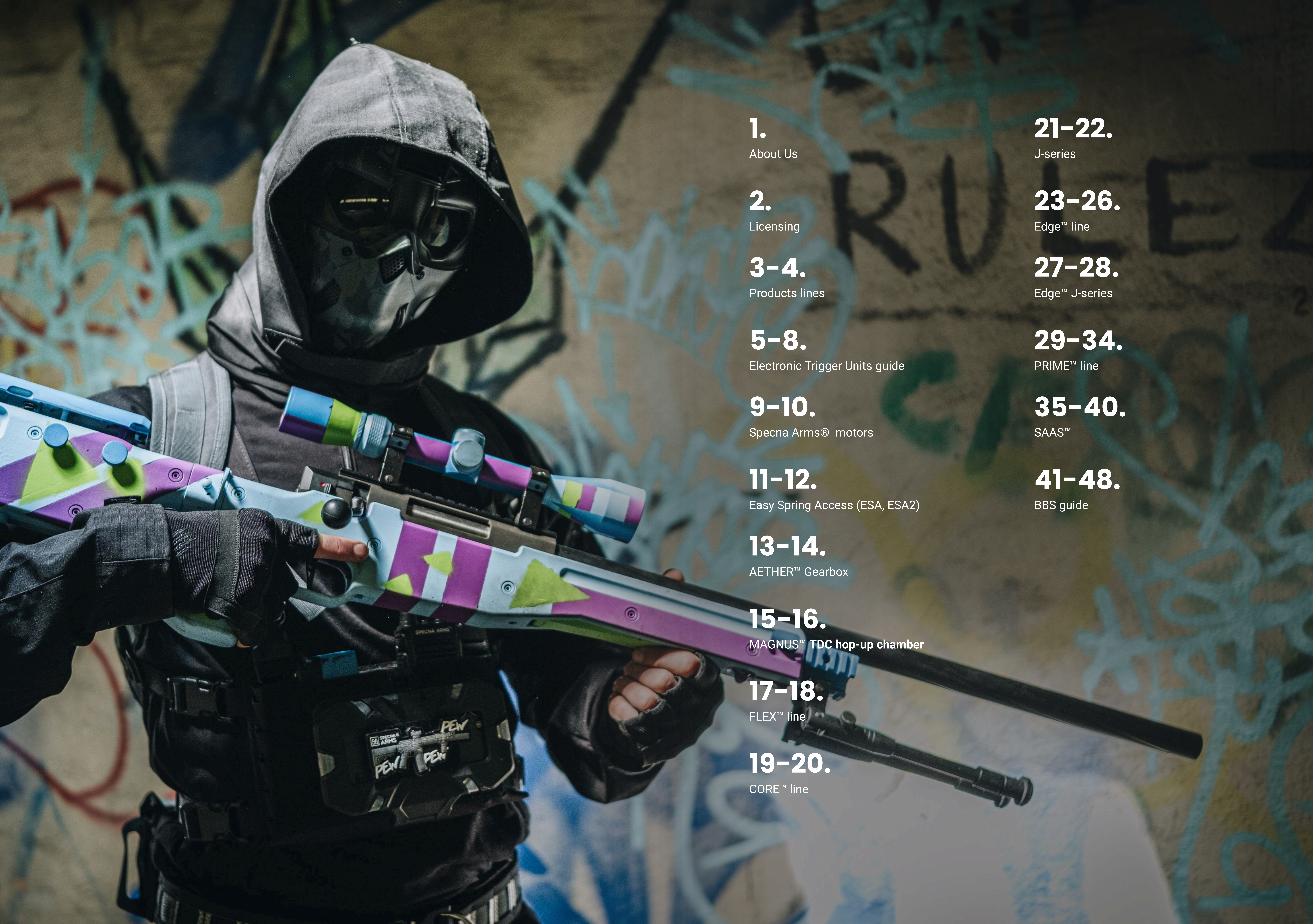
We are excited to present the **new Specna Arms® Products Guide** — a place where **passion for airsoft meets innovative technical solutions**. We design our replicas with players of all skill levels in mind, as demonstrated by our four product lines: FLEX™, CORE™, EDGE™, and PRIME™. Each one offers unique features tailored to the expectations of both beginners and advanced users.

In this year, we focus on technological evolution by introducing new AK models under the **PRIME™ line**, as well as licensed accessories that let you experience the essence of “Your Way of Airsoft.” We want to show that even in our entry-level lines, such as **FLEX™** or **CORE™**, it’s possible to implement solutions traditionally reserved for high-end replicas. Meanwhile, our premium segment replicas, enriched with pioneering features, surpass market expectations.

We invite you to explore our latest offerings. We believe you’ll find the perfect gear for your needs and discover just how much fun and challenge airsoft can bring — Specna Arms style.



CONTENTS.



1.

About Us

2.

Licensing

3-4.

Products lines

5-8.

Electronic Trigger Units guide

9-10.

Specna Arms® motors

11-12.

Easy Spring Access (ESA, ESA2)

13-14.

AETHER™ Gearbox

15-16.

MAGNUS™ TDC hop-up chamber

17-18.

FLEX™ line

19-20.

CORE™ line

21-22.

J-series

23-26.

Edge™ line

27-28.

Edge™ J-series

29-34.

PRIME™ line

35-40.

SAAS™

41-48.

BBS guide

ABOUT US.

Specna Arms® is a trusted airsoft brand recognized for reliability, innovation, and affordability. We provide gear for both newcomers and experienced players. Our FLEX™, CORE™, EDGE™, and PRIME™ lines each deliver unique features, yet remain united by passion, precision-engineered components, and our motto: “Your Way of Airsoft.”

We partner with license holders like Rock River Arms®, Daniel Defense®, Strike Industries®, Kruk®, and KGM® to accurately recreate authentic firearm designs. We constantly refine our products based on years of expertise and direct player feedback. Our mission is to seamlessly blend professionalism, affordability, and meticulous attention to detail. The Specna Arms® team continually implements new technologies, values community insights, and adapts replicas to real-world conditions.

By choosing Specna Arms®, you invest in gear that excels in even the most demanding scenarios. Join us and discover your own path in the world of airsoft – Your Way of Airsoft.

FOR MORE VISIT:

www.specnaarms.com

LICENSED BY.



Lic*

Rock River Arms® is an American manufacturer of firearms, parts and accessories for AR-15 type rifles and other firearms.

It was founded in 1996 by the Larson brothers who had been working at Springfield Armory for ten years before they established a partnership with Les Baer. Today, operating in facilities in Colona, Illinois, the company produces a full line of “AR” style rifles, all built with the same focus on providing high-quality products.

STRIKE INDUSTRIES



Strike Industries® is a company from California that has been creating recognized and innovative accessories for AR and AK system weapons, pistols, and other firearms since 2010.

Aluminum accessories made in CNC technology brought them great popularity. Their main features are precision of craftsmanship, low weight, and remarkable ergonomics. Moreover, the compelling design does not allow you to pass by their products indifferently.



Daniel Defense® is one of the most famous manufacturers of AR15 carbines in the world.

It is a company settled in Georgia that started with the production of accessories for firearms. They gain great recognition for the MK18 carbine handguard and later for the entire carbine, adopted by the US SOCOM. It is a legendary model known from special forces operations, games, or movies, appreciated for its reliability and versatility. Nevertheless, the Daniel Defense offer is much wider and includes many interesting and innovative models.



KGM Industrial Consortium is a German company specializing in advanced rail systems for AK-platform rifles.

Their products meet STANAG and SOPMOD Block II standards, ensuring full factory functionality and compatibility with under-barrel grenade launchers. Designed to withstand extreme temperatures and heavy use, they remain lightweight (under 300g) and highly durable. KGM is ISO 9001:2015 certified and recognized by NATO and the U.S. Defense Logistics Agency.



KPYK is a Ukrainian company specializing in AK-platform parts and accessories, recognized well before the conflict.

Their stocks and handguards achieved acclaim overseas and are now widely used worldwide. Despite the war, they keep developing new solutions through rigorous testing and user feedback to advance weapon performance. KPYK's testing ensures each upgrade boosts reliability and unlocks firearm potential.

FOR MORE VISIT:
www.rockriverarms.com

FOR MORE VISIT:
www.strikeindustries.com

FOR MORE VISIT:
www.danieldefense.com

FOR MORE VISIT:
www.kgm-trade.com

*A registered Trademark of Rock River Arms
INC. 1042 Cleveland Rd., Colona IL 61241
USA.

PRODUCT LINES.

FEATURE	FLEX Gen.2	CORE Gen.2	EDGE Gen.2	PRIME
RECIVER	Nylon reinforced polymer	Nylon reinforced polymer	Aluminum	Aluminum
HANDGUARD	Nylon reinforced polymer	Aluminum*	Aluminum*	Aluminum*
BARREL	6.03mm brass barrel	6.03mm brass barrel	6.03mm brass barrel	6.02mm stainless steel
GEARBOX SHELL	AETHER	AETHER	AETHER	AETHER
CYLINDER	Aluminum	Aluminum	Aluminum	Steel
CYLINDER HEAD	Polymer	Polymer	Polymer	Aluminum
PISTON	Polymer full steel teeth	Polymer full steel teeth	Polymer full steel teeth	Polymer full steel teeth
PISTON HEAD	Polymer	Polymer	Polymer	Aluminum
NOZZLE	Aluminum with o-ring	Aluminum with o-ring	Aluminum with o-ring	Aluminum with o-ring
GEARS	Steel	Steel	Steel	Steel - CNC Finished
HOP-UP	MAGNUS TDC	MAGNUS TDC	MAGNUS TDC	MAGNUS TDC
MOTOR	Advanced for FLEX	Advanced for CORE	Advanced for EDGE	DARK MATTER - Brushless
ETU	HAL ETU / X-ASR MOSFET	HAL ETU	HAL ²	ASTER II
MAGAZINES	1x Hi-Cap	2x Mid-Cap + Speed loader	2x Mid-Cap + Speed loader	2x Mid-Cap + Speed loader

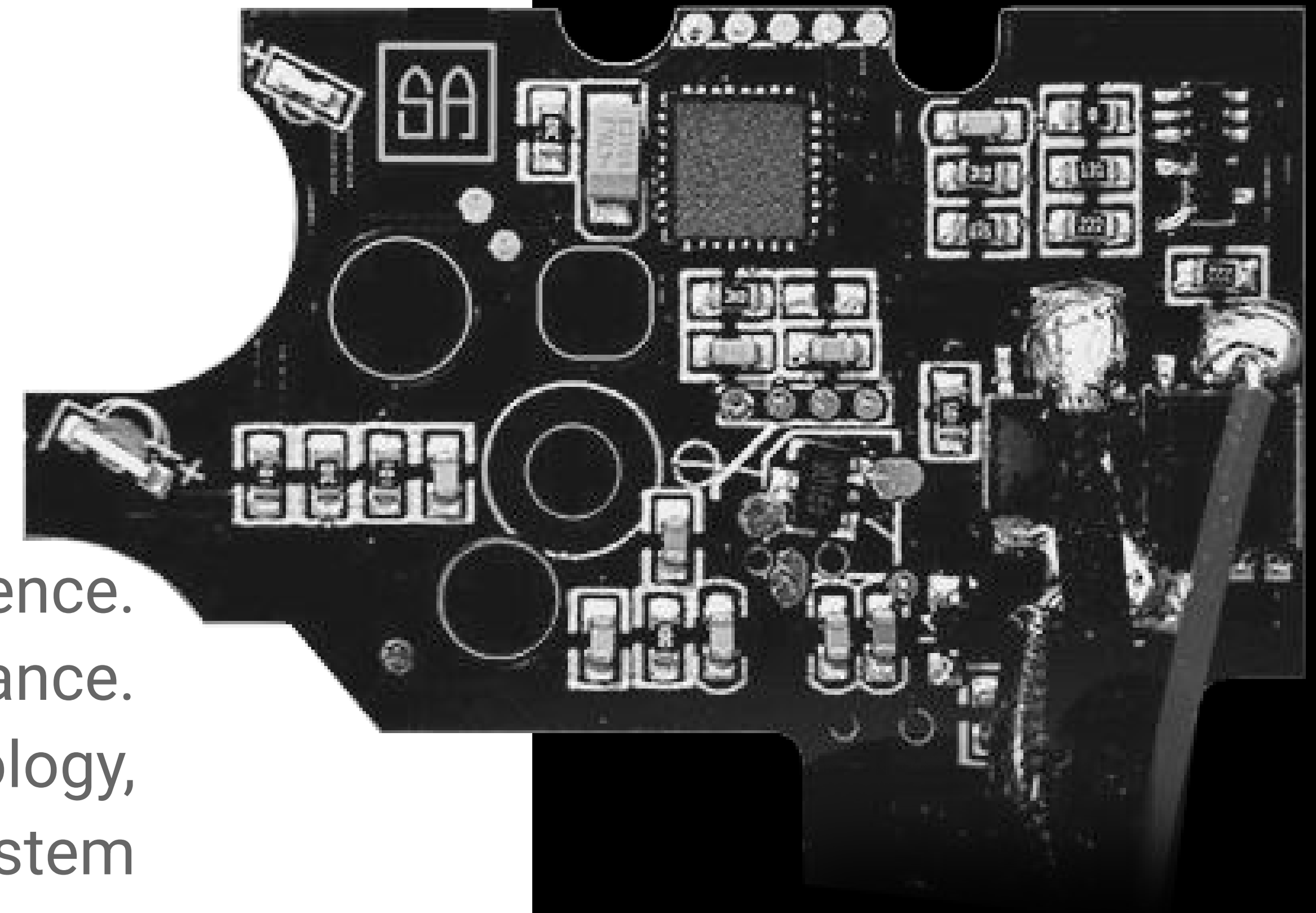
* Depends of model  Gen.2 upgrade



HAL™

ELECTRONIC TRIGGER UNIT

HAL™ is an electronic unit designed to enhance your airsoft experience. Its advanced features will put you in control of your replica's performance. Featuring magnetic sensor-based trigger detection and Hall effect technology, HAL™ provides precise and reliable trigger response. An active brake system increases control and accuracy, while the binary trigger allows for crisp and consistent fire. Programming the HAL™ is very simple with an intuitive trigger interface, making customization quick and easy. In addition, a low battery alarm ensures you never run out of power unexpectedly.



TRIGGER DETECTION BASED ON MAGNETIC SENSORS AND HALL EFFECT

ADJUSTABLE TRIGGER SENSITIVITY (5 levels from 20 to 100%)	BINARY TRIGGER	ACTIVE BRAKE	ADJUSTABLE PRE-COCKING (6 levels)	LOW BATTERY ALARM
---	---------------------------	-------------------------	---	----------------------------------

PROGRAMMABLE SEMI FIRE MODES

(SEMI, BINARY, AUG, SNIPER)

PROGRAMMABLE AUTO FIRE MODES

(FULL, AUTO, SEMI, 3-RD BURST, 5-RD BURST)

GATE ASTER™

The built-in **ASTER™** unit is equipped with the innovative optical sensors and the smart fuse that protects the battery, motor, and the controller, even in case of reverse battery connection. The module offers even 250 possible trigger sensitivity settings and many more useful functions that will give you the upper hand on the airsoft field.

WHAT MAKES ASTER SO SPECIAL?

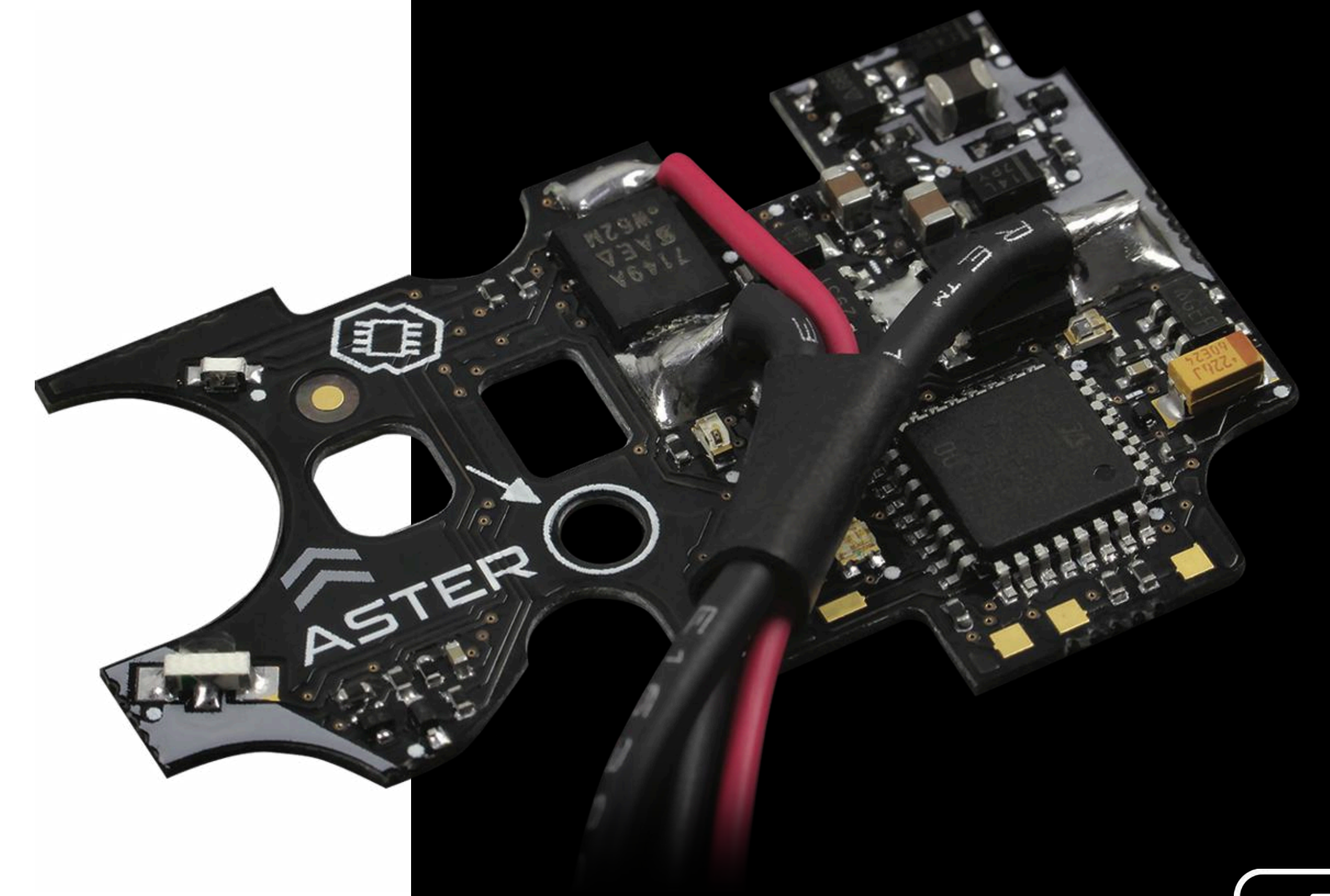
- Protection against battery reverse polarity
- Proximity trigger sensor which offers even 250 possible sensitivity settings
- Option to configure its main settings simply via trigger or completely through GATE Control Station™ App for Android, Windows and macOS (also for iOS)
- Built-in RGB led makes programming easier

GATE ASTER II

The Aster II module is equipped with **Bluetooth®**, which allows access to the replica's settings, its telemetry, when using the app. It features state-of-the-art technological solutions that will allow the replica to be customised to the user's needs, while allowing it to work with both brush and brushless motors. **The Aster II™** has a built-in fuse responsible for protecting the battery, gearbox, motor and controllers. It has been manufactured to military standard MIL-V-173C, which protects it from adverse weather conditions. Features of the **Aster II Bluetooth®**.

- Binary trigger
- Motor and battery protection compatible with brushless motors
- Pre-cocking setting possible
- Active Break
- Low battery warning
- Sniper mode
- Bluetooth connection to the app

FOR MORE VISIT:
www.gatee.eu



GATE CONTROL STATION™ APP



ASTER and GATE Control Station give you total control of your AEG. The GCS offers you the option to:

- ☑ Control your airsoft gun from smartphone with Android (also with iOS) and PC with Windows or macOS
- ☑ Simply adjust the ASTER™ settings
- ☑ Update and upgrade firmware
- ☑ See the BB counters and Measurements statistics
- ☑ Perform diagnostics and send reports

HAL²TM

ELECTRONIC TRIGGER UNIT

Step into the 21st century with the HAL²TM electronic control unit by Specna Arms®!

The HAL² TM is a high-tech electronic unit that represents the new brain of your replica. Based on the Hall effect, the trigger provides unprecedented sensitivity, even over 500 points, as well as responsive operation, while being insensitive to dirt or external light. The single-board design ensures quick and trouble-free installation, while the built-in Bluetooth® Low Energy module provides an easy and stable connection to your phone for configuration while ensuring long operation on the replica's battery. A number of sensors monitor the replica's flawless operation and will prevent damage to the replica when it detects a problem.

TRIGGER MOTION
DETECTION BASED
ON THE HALL EFFECT

UP TO 500
TRIGGER
SENSITIVITY
POINTS

PRE-COKING

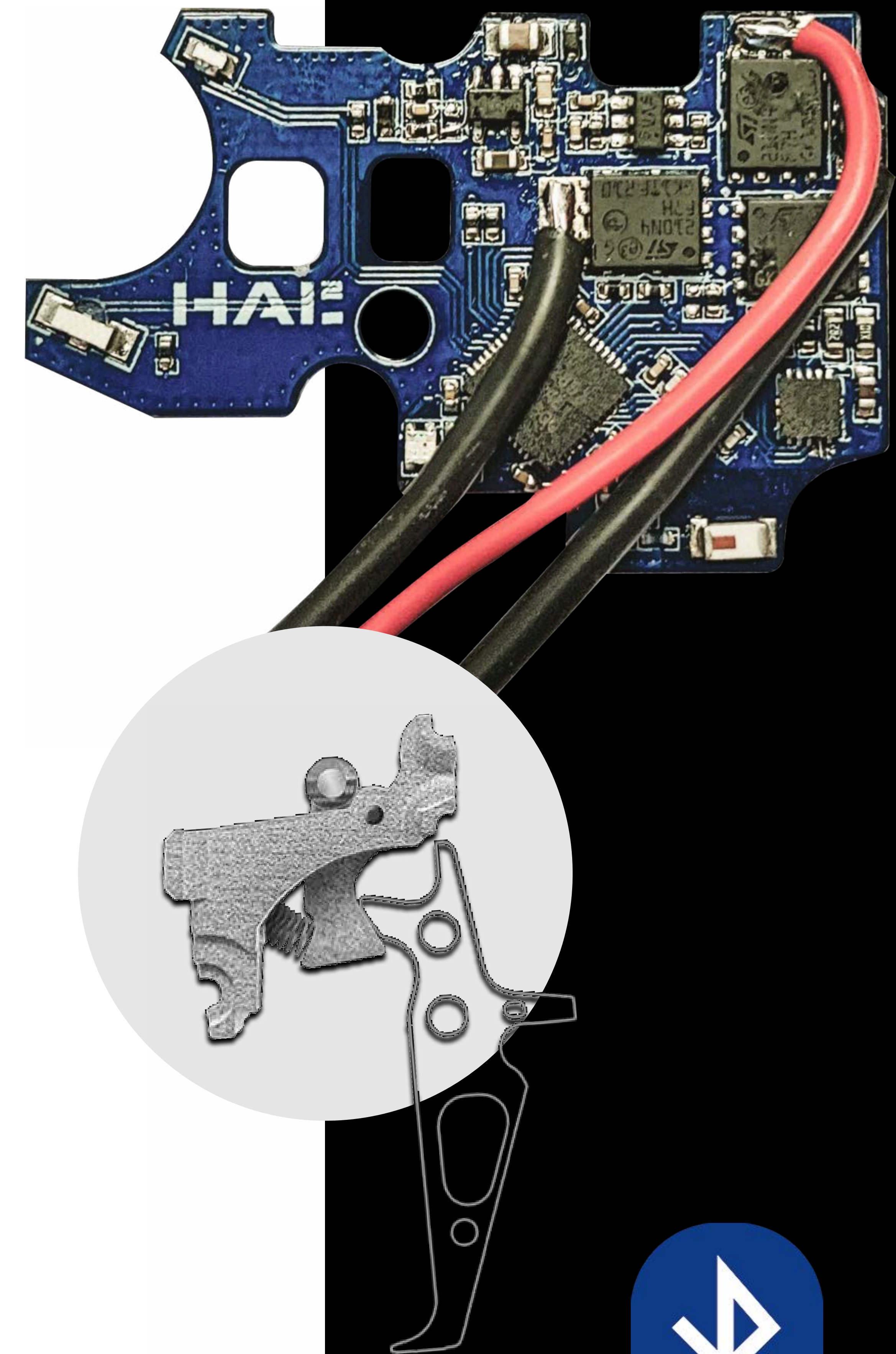
ACTIVE
BRAKE

TRIGGER
EQUALIZER

DESIGN BASED
ON A SINGLE
BOARD

BUILT-IN
BLUETOOTH®
LOW ENERGY

A NUMBER
OF SENSORS



DESIGNED AND
MANUFACTURED
IN EUROPE.



CONFIGURING YOUR REPLICA HAS NEVER BEEN EASIER!

With the new Specna Link™ app you will discover all the possibilities of the HAL²™ electronic unit. Select SINGLE, BURST, or AUTO firing modes and assign them to the selector position of your choice. Select the burst length, set the rate of fire, and adjust the parameters to suit your requirements. Save settings for different games and use them alternately. Quickly configure all your replicas with the HAL²™ thanks to the function of storing them on your profile. Thanks to the advanced telemetry, you can keep track of the status of your replica and its performance during servicing. These and many other features as well as future functionalities are available for free, to all registered users of the app, without additional paid solutions.

THE APP IS AVAILABLE FOR IOS AND ANDROID DEVICES





SPECNA ARMS® MOTORS

Specna Arms® Advanced motors used in the FLEX™, CORE™, and EDGE™ lines are carefully selected brushed motors, chosen for their synergy with each line's performance profile. They strike a balance between power output and energy efficiency to ensure optimal operation of the factory gearbox.





DARK MATTER™

BRUSHLESS MOTORS

Unveil the might of Specna Arms® Dark Matter™ motors. Peerless prowess and reliability in every clash. With high torque, they provide excellent power and shot accuracy, while their silent operation allows you to operate almost undetected. Grasp the essence of Dark Matter™ and transcend your airsoft journey into realms anew.

HIGH
TORQUE

EFFICIENCY

SILENCE

ALUMINIUM
HOUSING

TRANSCEND TECHNOLOGY

Brushless motors are a generational leap in terms of reliability, smooth operation, and efficiency compared to classic electric motors. They stop making compromises. At the same voltage and speed, they provide unattainable power and torque compared to regular motors. This allows them to run with strong mainsprings without sacrificing fire rate and immediate response.

A WIDE RANGE TO MEET YOUR NEEDS

Each custom replica requires an individual approach. Therefore, to meet the needs of airsoft players, we present a wide range of motors, adapted to every need.

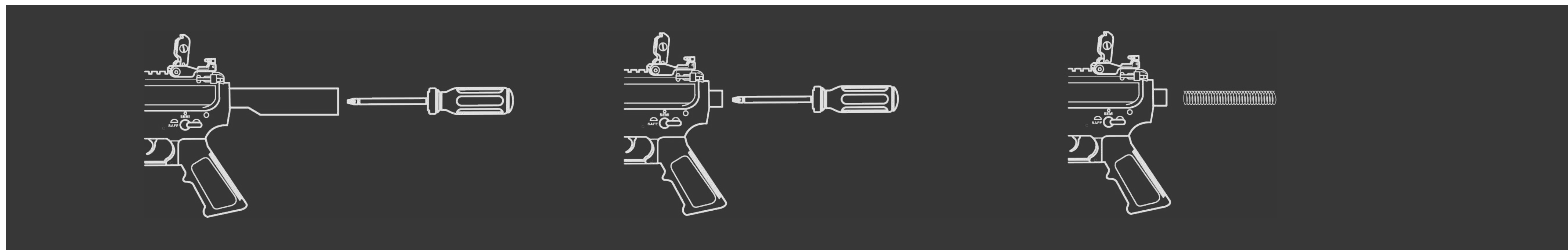
Long and short motors are available in three versions with different speeds and torques. Providing speed and power adapted from DMR to speedsoft replicas.





Specna Arms® EDGE™ line is equipped with a quick spring change system. There is no need to take the gearbox out of the replica in order to exchange the spring or adjust the muzzle velocity to the required value. All you have to do is to disassemble the buffer tube by unscrewing just one screw, spin off the pin with the spring guide and exchange the spring.

The whole operation takes about one minute and requires only a screwdriver.



1.

Use a screwdriver to remove the screw holding together the stockpipe and the receiver; remove the stockpipe.

2.

Use a screwdriver to gently push the spring guide forward. The spring guide is clearly visible after removing the stock pipe. Rotate the spring guide by 90 degrees until you feel the spring's tension.

3.

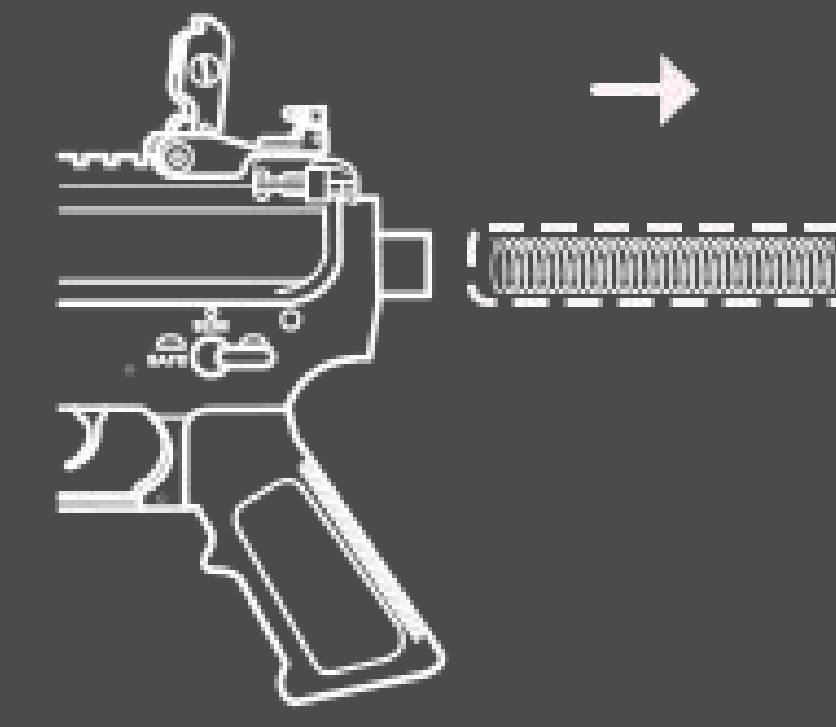
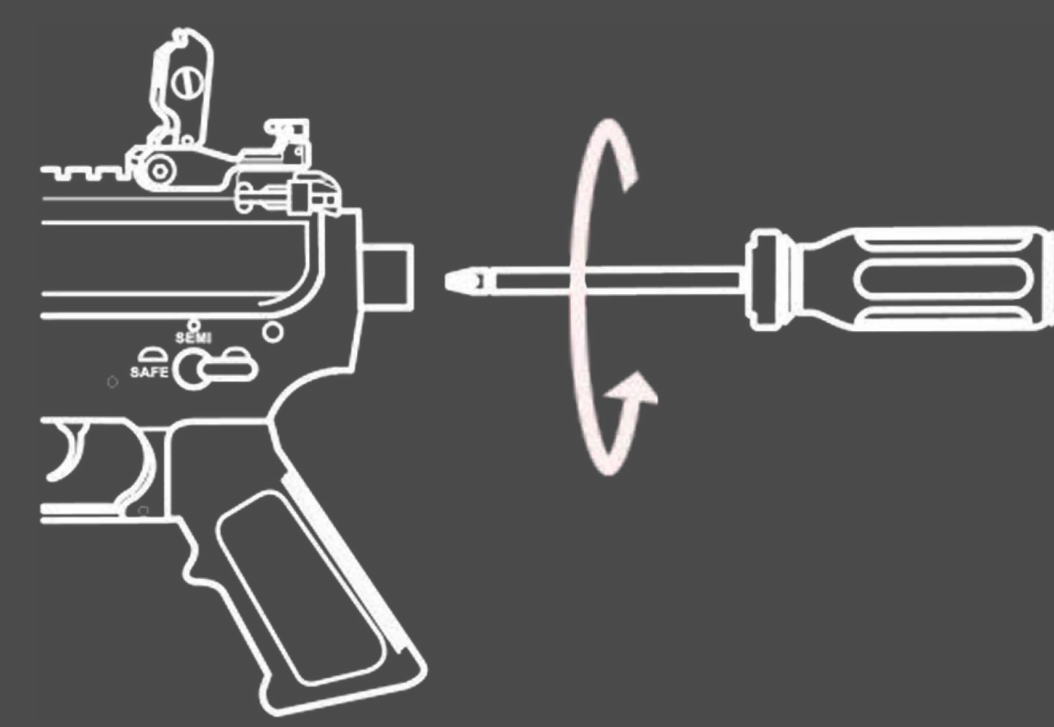
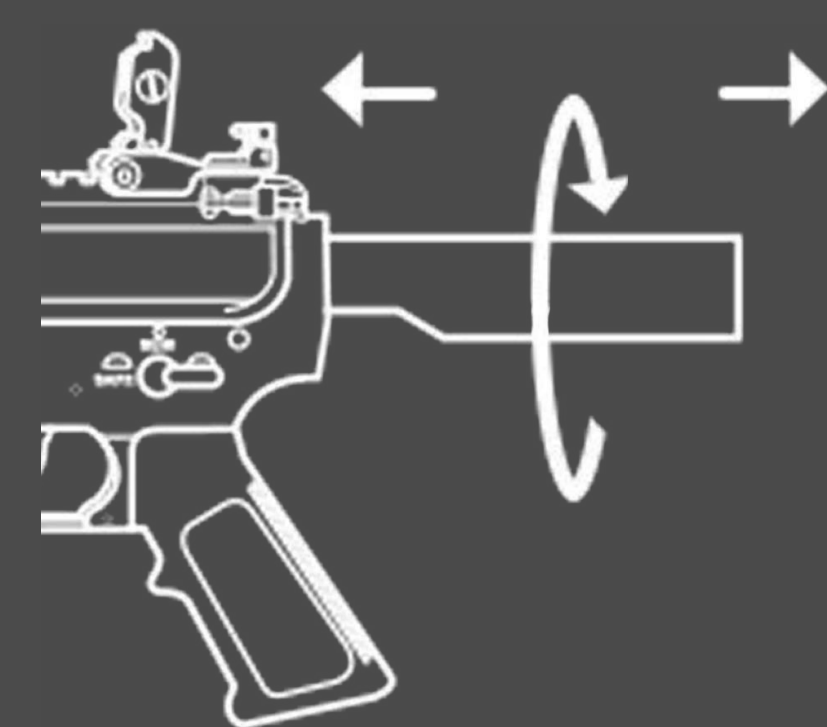
Pull the spring guide and spring out of the gearbox.

ESA2

Easy Spring Access

EU Registered design no. 007422159-0001.

It's hard to imagine an easier and quicker way to change the spring. The ESA2™ requires no tools and allows you to change the spring in less than a minute. Just remove the buffer tube, unscrew the spring guide and it's done! ESA2™ allows you to quickly adjust the muzzle velocity while being in the field. You can adapt your replica to indoor or field airsoft games in a second.



1. Unscrew the castle nut on the stock tube.

2. Rotate the stock tube and remove it from the lower receiver.

3. Unscrew the pin with spring guide and spring, then remove it from the gearbox.

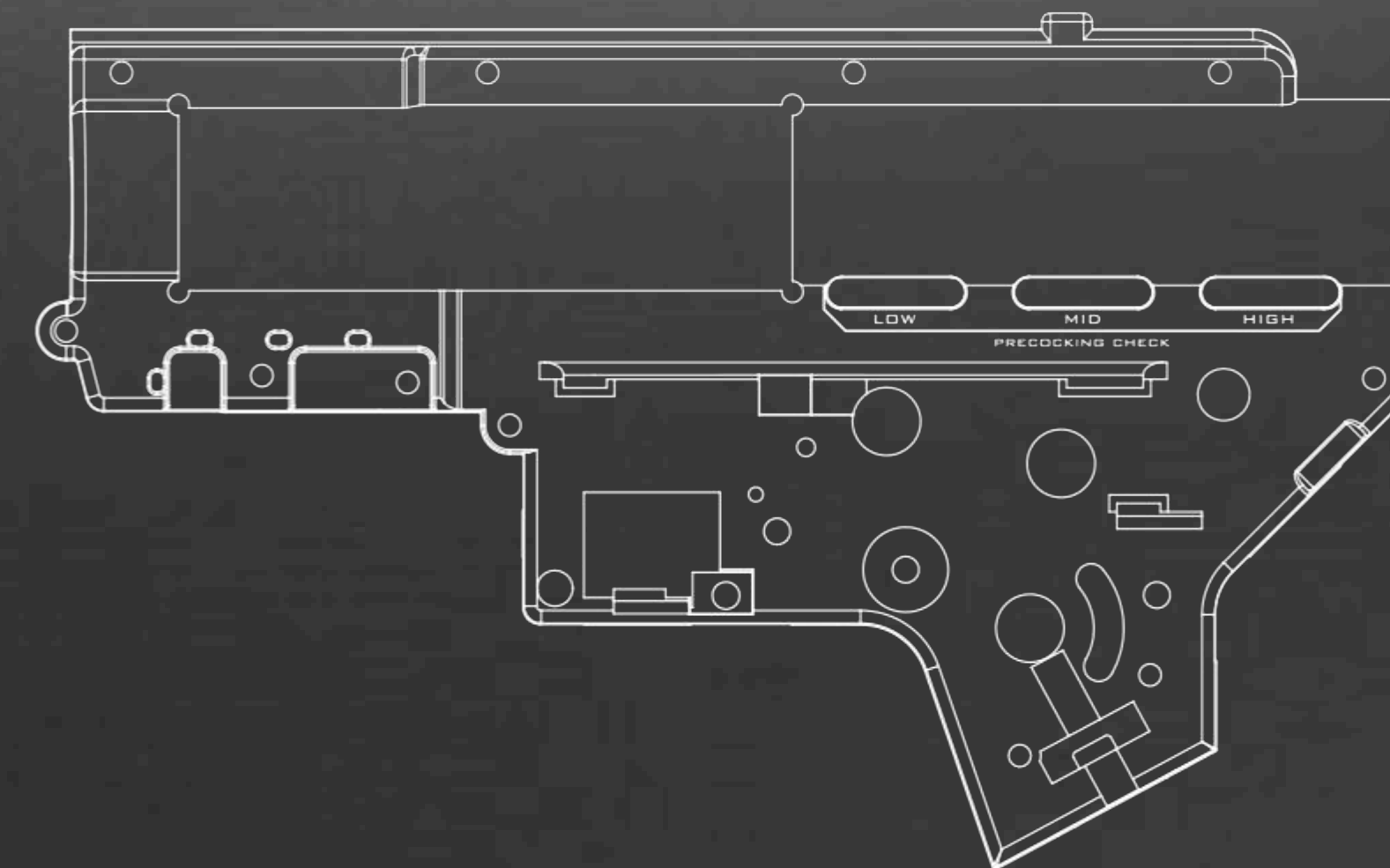
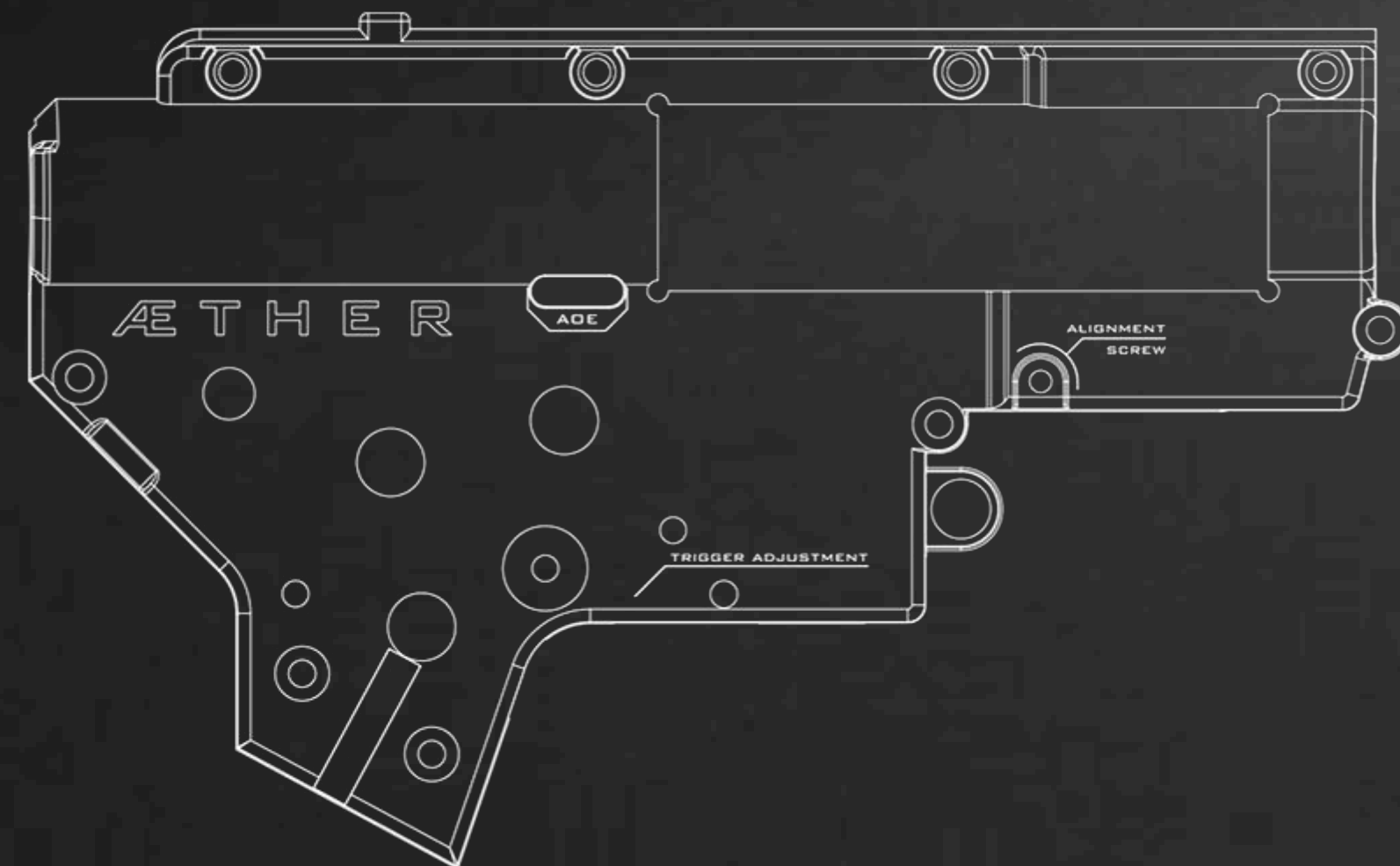
4. Replace the spring and then mount all parts back again, repeating the process in reverse.

Æ T H E R

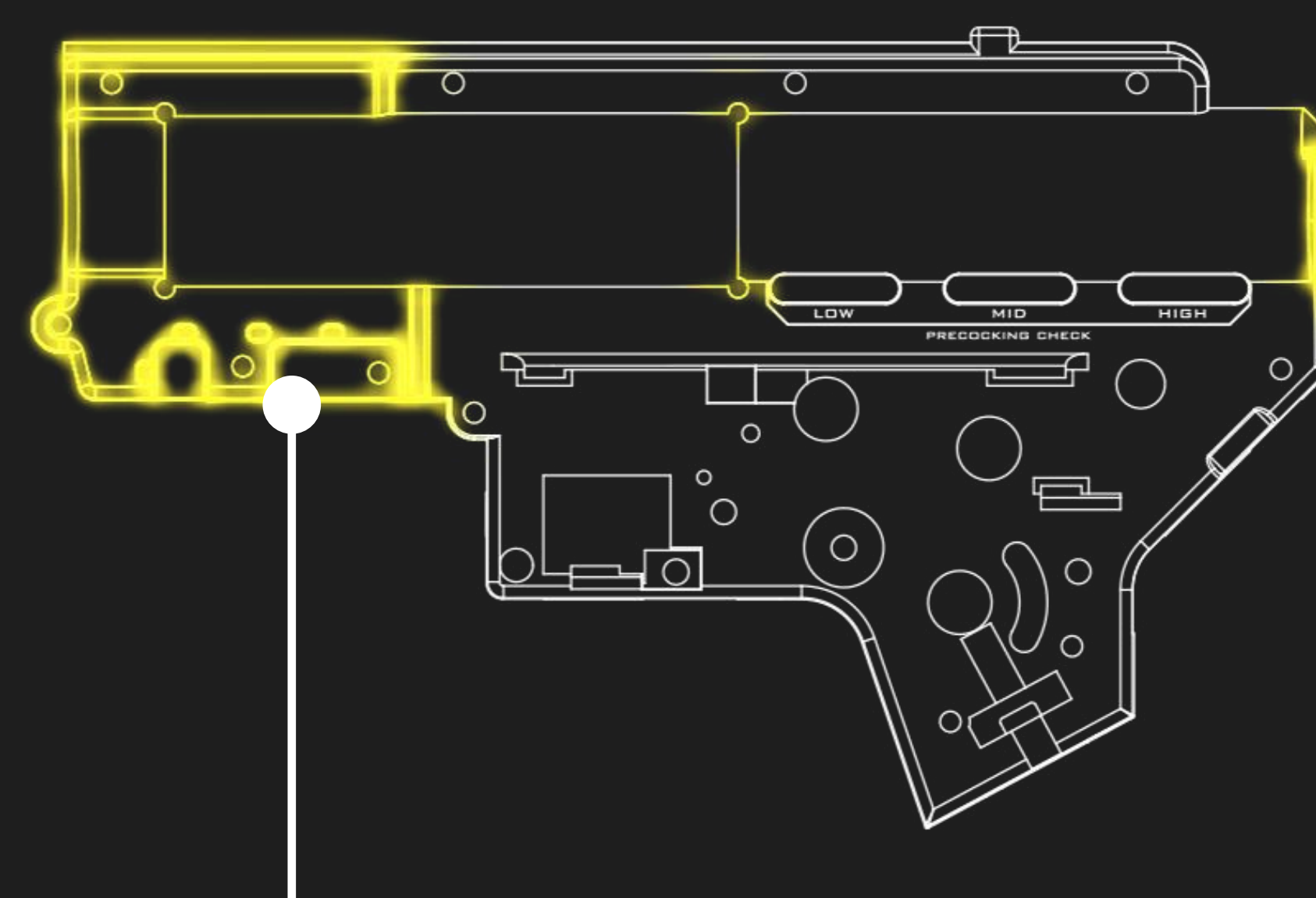
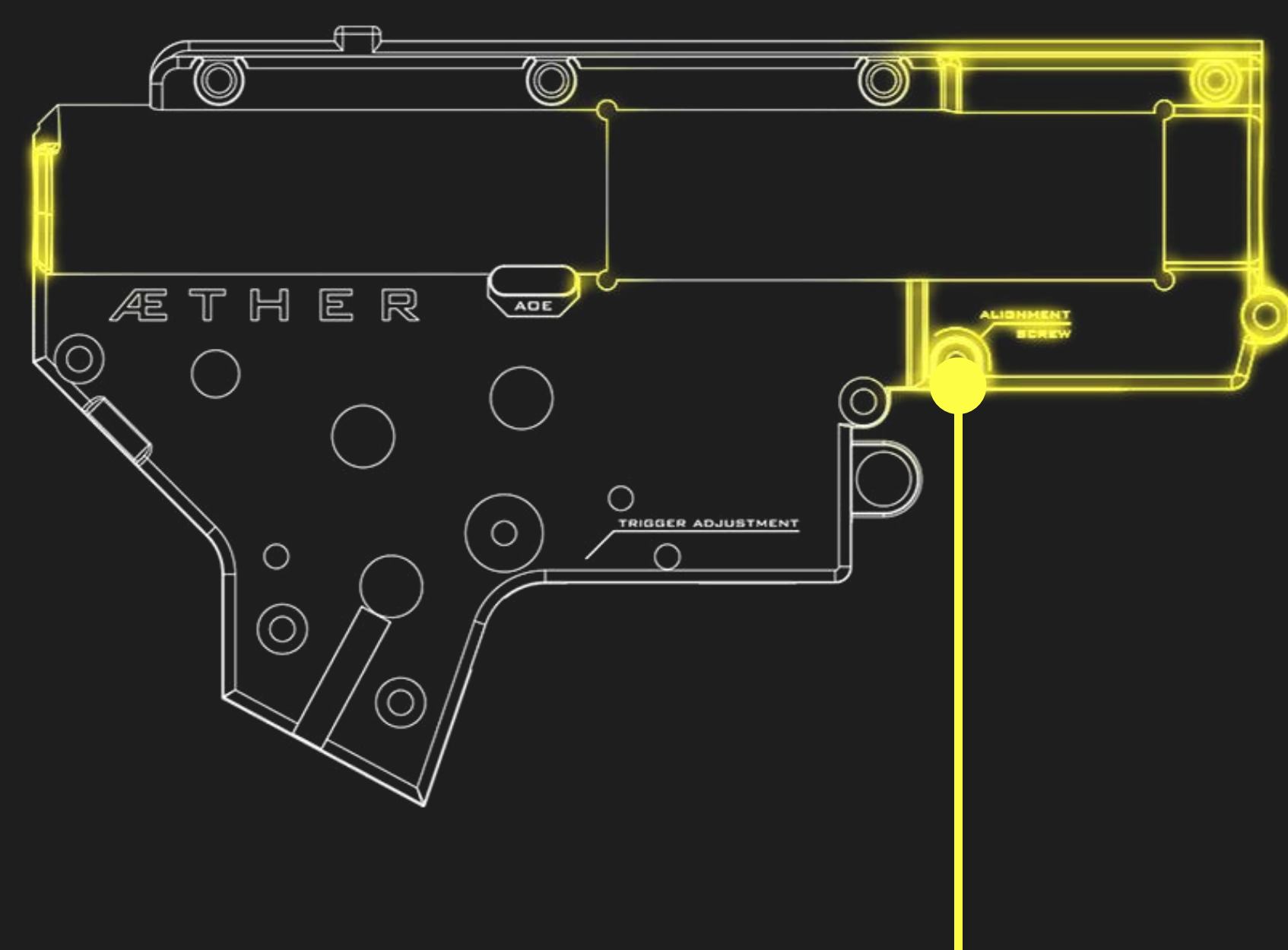
GEARBOX

The second most commonly modified component of an airsoft replica is the gearbox. In this case, we decided not to compromise and completely redesigned the heart of the PRIME™ line. We started from scratch, designing an entirely new gearbox shell that offers not only exceptional durability but also numerous features for those who want to know how their replica works.

The AETHER™ gearbox shell has been engineered to provide the highest durability available in a factory replica. At the same time, it adheres to one of our core brand principles: high compatibility with parts from other manufacturers. This makes it an excellent foundation for the most demanding custom builds and can be used in other replicas as well.



HARDER BETTER FASTER STRONGER

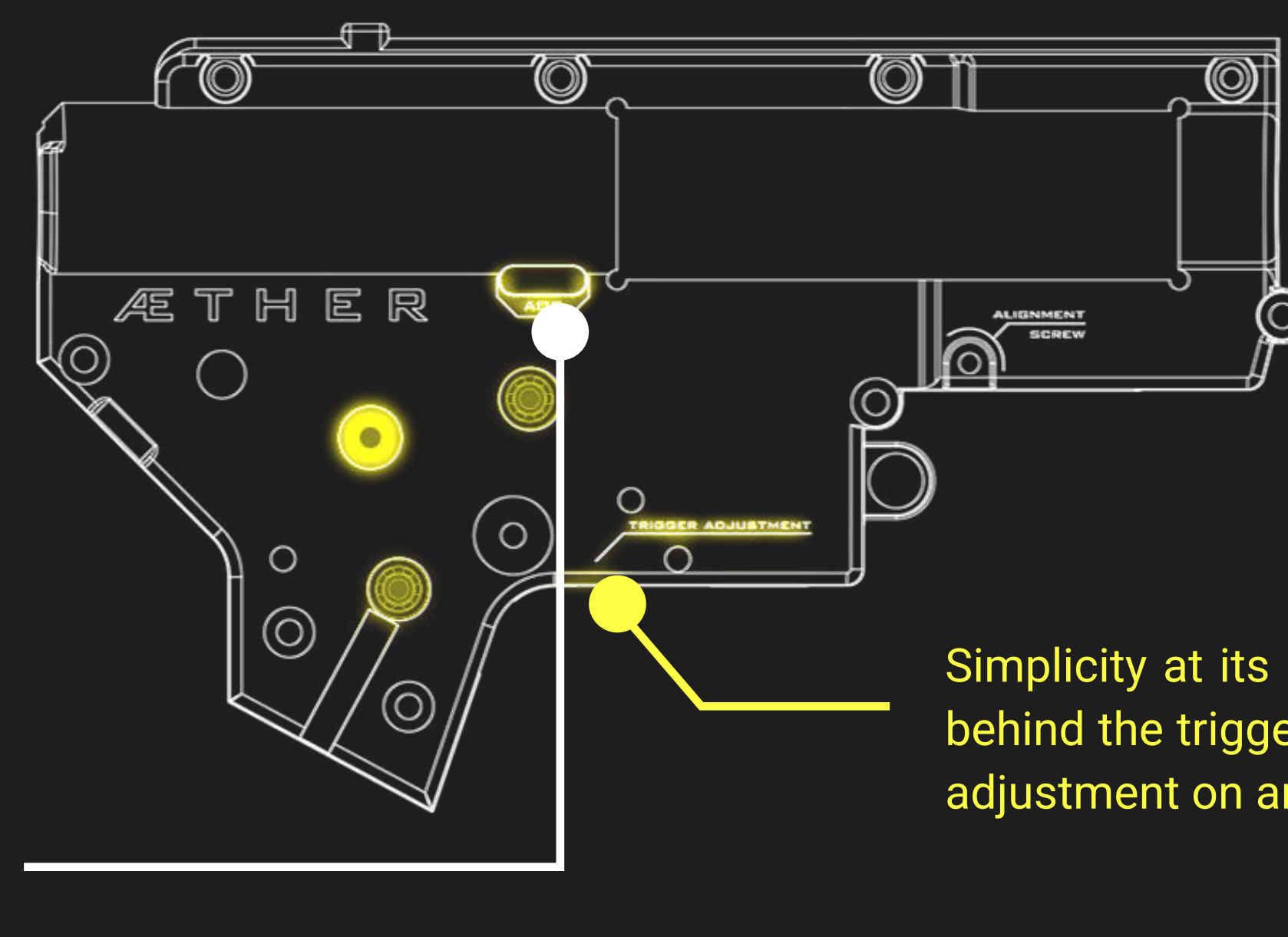


We have reinforced critical areas such as the front of the gearbox shell and the spring guide base, while paying close attention to the cylinder window geometry to minimize stress on the pneumatic system's axis.

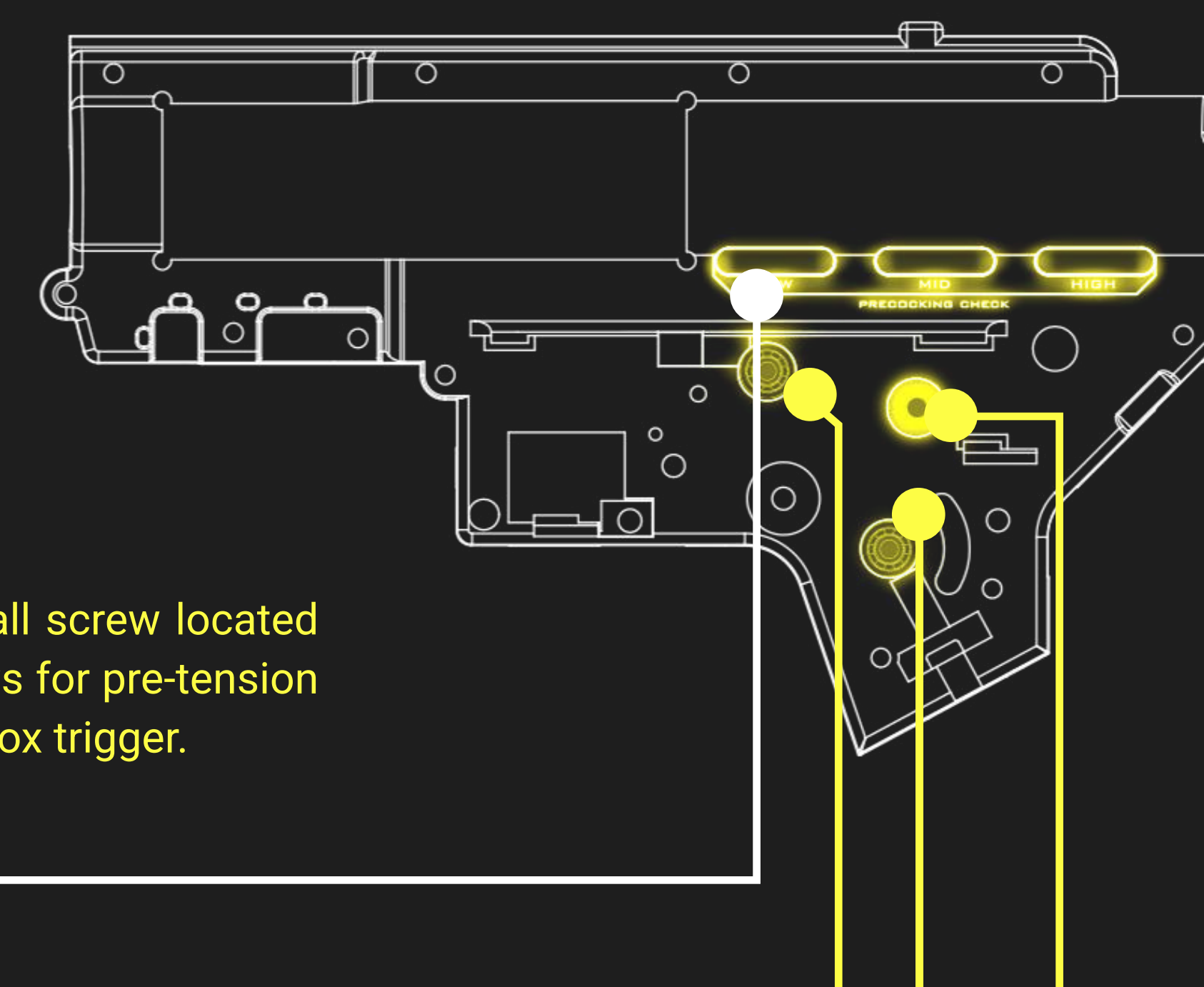
With future HPA upgrades in mind, we've designed the gearbox shell to allow for horizontal adjustment, **ensuring optimal performance and a great air seal.**

To ensure **seamless interaction between the piston and piston gear**, we have included inspection holes for checking the Angle of Engagement (AOE) and pre-cocking. This allows you to verify that the piston gear correctly engages the first tooth of the piston or that the cycle stops at the appropriate position, it also lets you check for Premature Engagement (PME).

To facilitate gearbox maintenance, servicing, and in case of gearset jams, we've included an inspection hole for releasing the **anti-reversal latch** and checking the bevel gear condition.

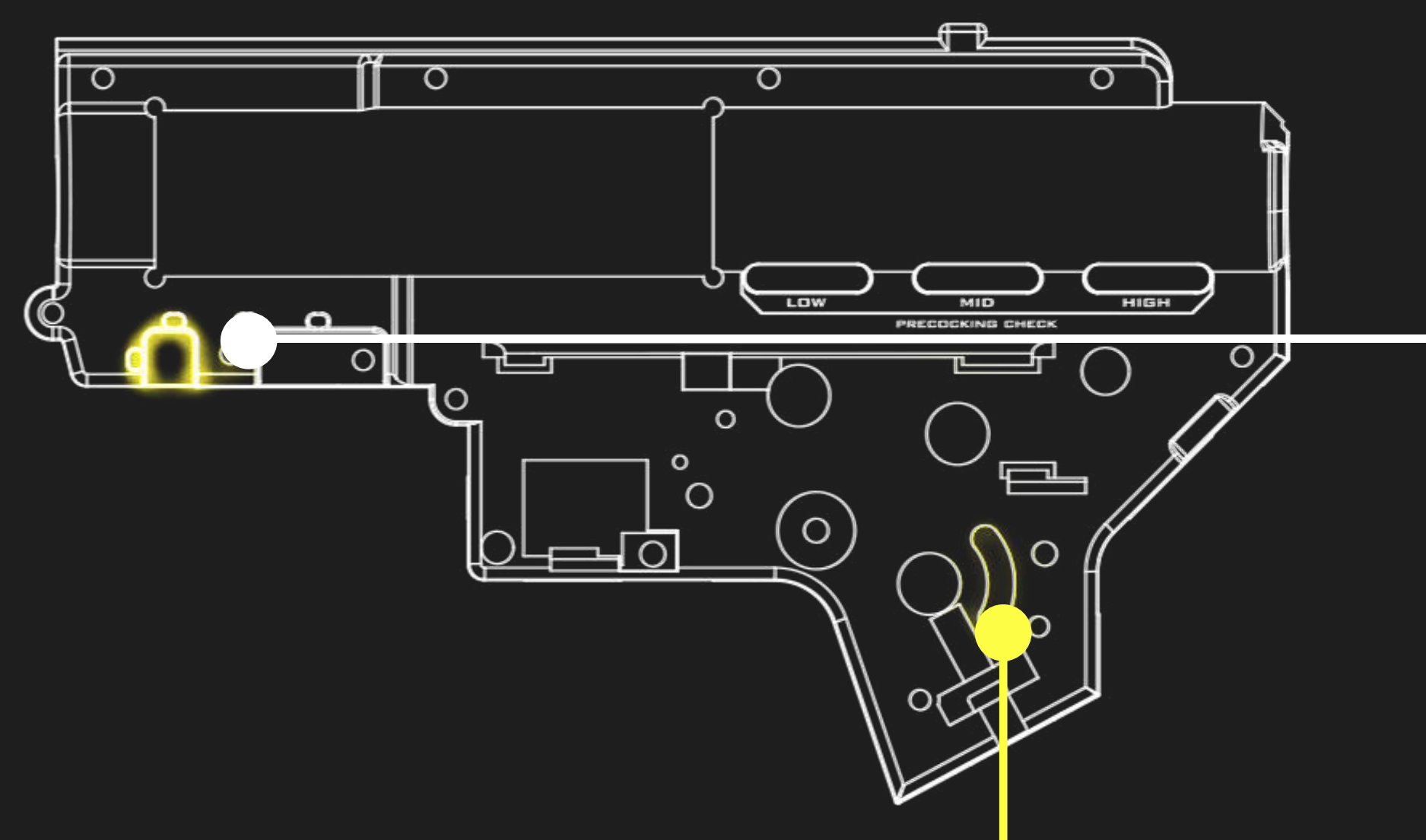


Simplicity at its best! A small screw located behind the trigger axis allows for pre-tension adjustment on any V2 gearbox trigger.



To ensure smooth operation, we've employed 8mm J-cage ball bearings on both the sector and bevel gears.

For those seeking modern solutions, we have prepared a gearbox shell designed to work with magazine sensors for GATE® ASTER II™ and TITAN II™ systems. The GATE® ASTER II™ system is available in select models. The magazine sensor is sold separately.



MAGNUS™

TDC HOP-UP CHAMBER

HELIUM™ FLAT-HOP BUCKING + 6.02MM STAINLESS STEEL INNER BARREL

The precision system is one of the first assemblies to be upgraded in airsoft replicas. This is a common modification whether it's just the hop-up rubber or the entire system including the barrel, hop-up rubber, and hop-up chamber. We decided to redesign the chamber, drawing inspiration from the top-tier tuning hop-up chambers available on the market. The result is our **Top-Down-Centre Magnus™ chamber**. Combined with our proven **HELIUM™ flat-hop rubber**, specifically designed for heavier airsoft BBs to ensure greater shot-to-shot consistency compared to lighter counterparts, and a 6.02mm stainless steel barrel for excellent accuracy and durability, this system offers a significant performance upgrade.



THE TEAM THAT CHANGES EVERYTHING



 SPECNA[®]
ARMS



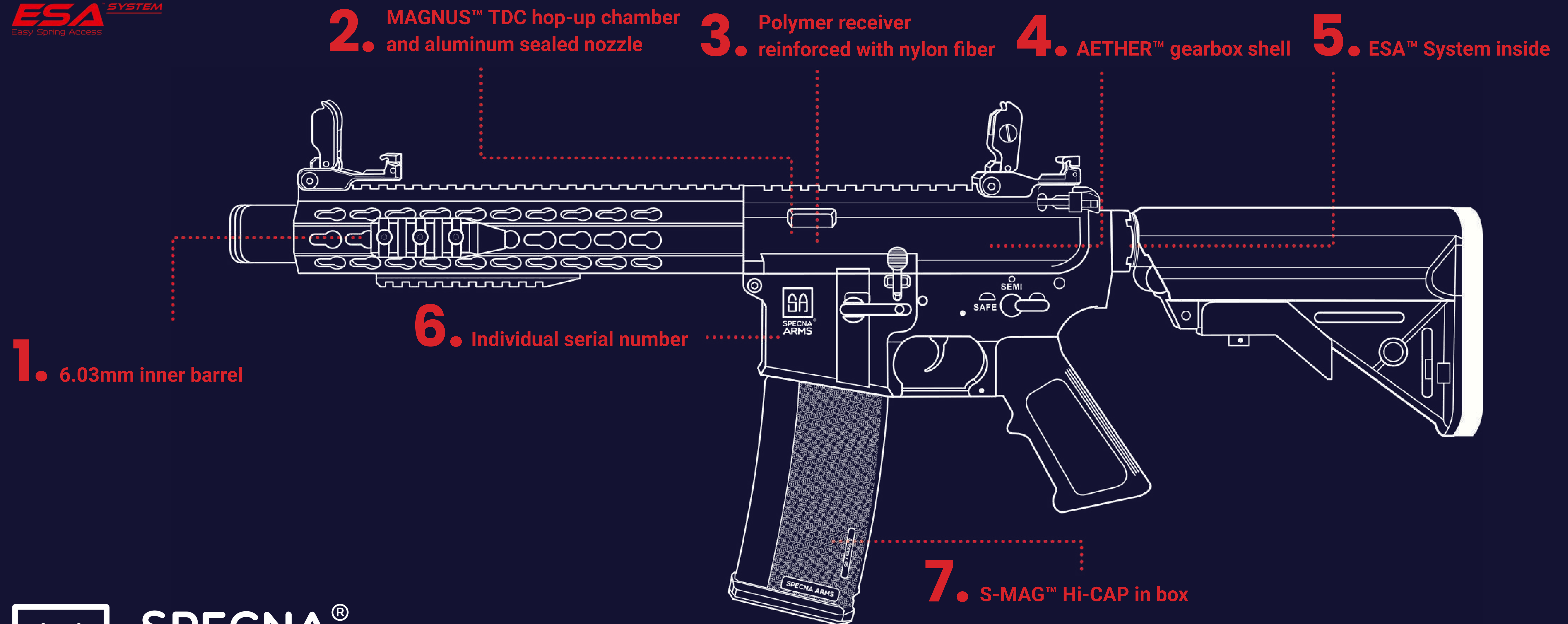


F

L

E

X



Gen.2

Available with GATE® X-ASR™ mosfet or Specna Arms HAL™ ETU

Specna Arms® FLEX™ Gen.2 is a response to the constantly changing needs of airsoft players. It is a line of the lightest replicas, perfect for dynamic CQB games.

The main features of the series are lightweight, polymer handguards, which enable quick handling and lightning-fast aiming. In combination with a MAGNUS™ TDC HU Chamber and aluminum sealed nozzle, a precision barrel, an AETHER gearbox shell, and the ESA™ system, Specna Arms® FLEX™ Gen.2 replicas are ideal Plug&Play options. Models from this line also serve as excellent bases for further modifications to boost power or rate of fire.



core
LINE

ESA™
Easy Spring Access

S-MAG™

6.03 MM

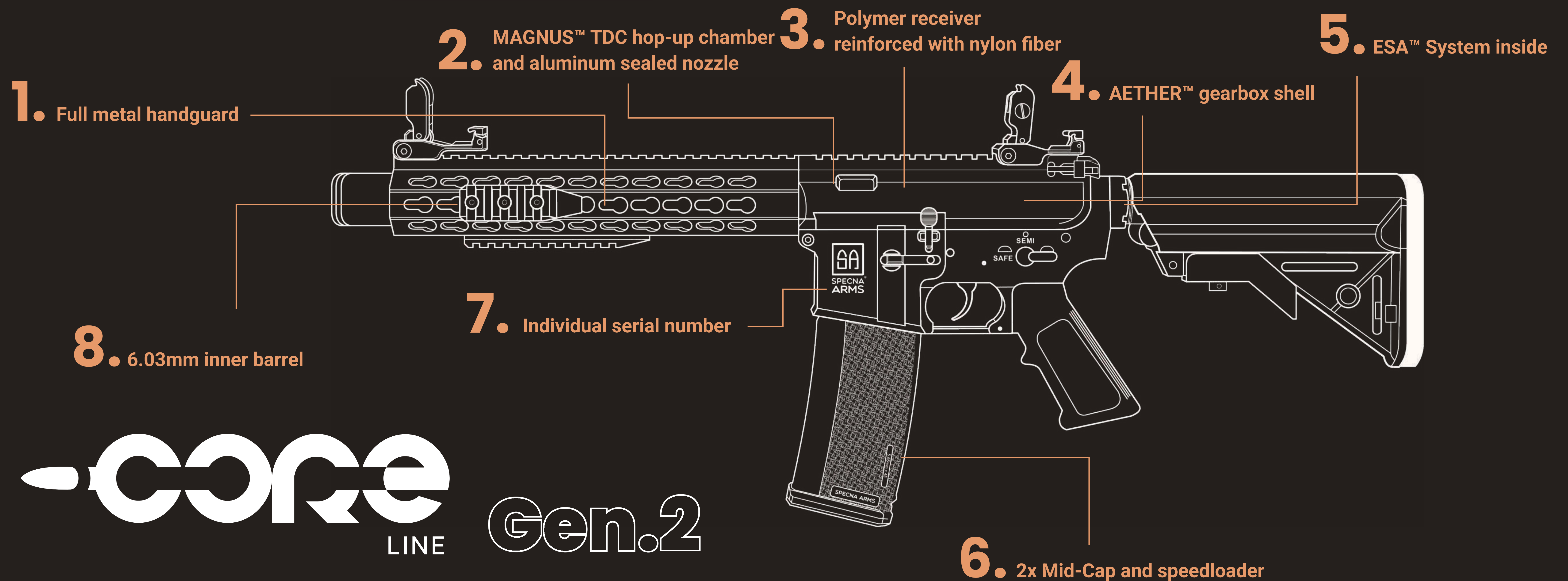
Æ T H E R

ESA™
System inside

2x S-MAG™
2x Mid-Cap and speedloader

Precision barrel

Reinforced Gearbox
Ready for M140 spring



Available with Specna Arms® HAL ETU

Specna Arms® CORE™ Gen.2 combines affordability with advanced features, offering exceptional quality for both beginners and seasoned players.

The reinforced nylon polymer body and aluminum handguard ensure durability, while the MAGNUS™ TDC Hop-up chamber and aluminum sealed nozzle guarantee precision. With the innovative ESA™ spring change system, the CORE™ Gen.2 delivers unmatched performance and convenience in airsoft.



| SERIES



~~Steel~~
light



J SERIES

Discover the J series, modern technical solutions
in a classic, well-known form.

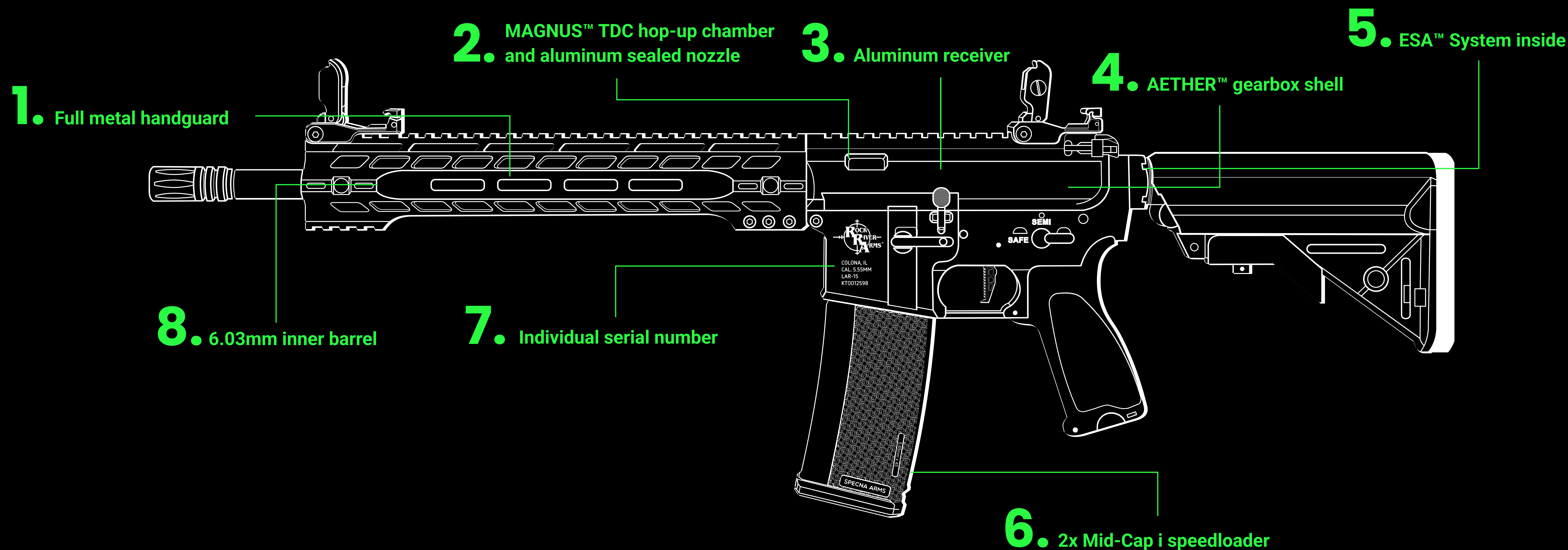


S P E C N A A R M S

EDGE







S P E C N A A R M S EDGE Gen.2

Available with Specna Arms HAL²™ ETU

EDGE™ ETU Gen.2 is a full-metal line of AEG replicas in the **Specna Arms®** family, designed to meet the expectations of even the most demanding airsoft players. Manufactured under licenses from Rock River Arms®, Daniel Defense®, and Strike Industries®, it delivers a new level of realism and performance.

Equipped with the MAGNUS™ TDC Hop-up Chamber, an aluminum sealed nozzle, the AETHER™ gearbox shell, a precision barrel, the ESA quick spring change system, and the advanced Specna Arms HAL²™ electronics, the EDGE™ ETU™ Gen.2 line redefines airsoft innovation.





S P E C N A A R M S
E D G E
J - S E R I E S

Made of steel, the J Series – practically indestructible.

PRIME™









PRIME™

P R I M E O R N O T H I N G

Meet the PRIME™ by Specna Arms®, the epitome of airsoft excellence. PRIME™ redefines standards, offering top-tier performance straight out of the box for an unmatched experience. The revolutionary **ÆTHER™** gearbox ensures unparalleled reliability and performance. Each PRIME™ replica features an Electronic Trigger Unit (ETU) with easy programmable modes and perfect trigger response.

The **MAGNUS™** hop-up chamber delivers unprecedented precision, paired with **HELIUM™** flat bucking and a 6.02mm stainless steel inner barrel for enhanced accuracy. The upgraded **ESA2™** system requires no tools and allows you to change the main spring in less than a minute. Experience airsoft with PRIME™ by Specna Arms® - where innovation meets excellence.

AVAILABLE WITH GATE ASTER II

PRIME™

THE BEST IS INSIDE!

PNEUMATIC SYSTEM AND GEARS SET

With a robust gearbox shell in place, we turned our attention to the internals. A completely new pneumatic system was our first focus. Our goal was clear: maximum airtightness and compression efficiency. The steel cylinder features external ribbing for effective heat dissipation, preventing significant diameter changes even during extended firing, and ensuring a consistent seal. The aluminum cylinder head is equipped with two o-rings for sealing and is designed to work seamlessly with the cylinder. The dedicated, sealed nozzle is designed for compatibility with the MAGNUS™ hop-up chamber. An aluminum piston head, precision-fitted with an o-ring, mounted on a polymer piston with a steel rack, ensures a perfect seal and efficient operation. The enlarged ventilation holes in the aluminum head promote consistent airflow.

The next step in creating a reliable gearbox was the gear set. Instead of the common sintered steel gears, we've opted for CNC-machined steel gears with a 16:1 ratio. Additionally, we've refined the shimming process to ensure perfect gear alignment.







S.A.A.S

SPECNA ARMS ACCESSORY SYSTEM



SAAS

SPECNA ARMS ACCESSORY SYSTEM

DISCOVER THE NEW SERIES OF ACCESSORIES CREATED BY OUR DESIGNERS FOR SPECNA ARMS® REPLICAS.

The SAAS™ (Specna Arms Accessory System) project is a result of our vast experience in manufacturing airsoft replicas. It covers various types of accessories like stocks, magazines, or grips. From the first draw till the final product, we design SAAS™ items with ergonomics and durability in mind. To provide users with the best performance possible, we have selected high-quality materials and used precision manufacturing technology. SAAS™ accessories are the perfect complementation of your Specna Arms® replicas, increasing their level of functionality.

DESIGNED IN EUROPE



LIGHT OPS STOCK

Light Ops Stock is designed as a lightweight and durable solution for your replica. Lightweight because it has a very simple, but ergonomic design, durable, because it is made from a flexible polymer, which can work in a wide range of temperatures. Stock is even more universal because of the QD mount for tactical sling and fits perfectly on a military standard AR15/M4 buffer tubes.

HEAVY OPS STOCK

Heavy Ops Stock gives you the ultimate space for your battery. One of the biggest battery compartment on the market joined with ergonomic design. Additionally, the stock has the QD mount for a tactical sling, which makes it even more universal. Polymer construction guarantees durability in every conditions, even in low temperatures. The stock fits on a military standard AR15/M4 buffer tube.





SPECNA ARMS
SOLAR™
TRIGGER

GATE
Made under GATE® Quantum Trigger license
ASTER™
Compatible with Aster V2

ANGULAR FRONT GRIP

Angular Front Grip is made from aluminum to make it lightweight and durable. It can be used both as a tactical grip and hand stop, so it's a universal solution for shooters and airsoft players. Additionally, it has QD mounts for slings, to make your carbine even more ergonomic and versatile. It was created to fit every MLOK-standard rail.





S-MAGTM FOR AR, AK and PCP platforms

- Extended capacity Mid-cap.
- Specna Arms texture for better grip.
- Durable polymer ready for tough combat conditions.
- Also available Hi-Cap magazines.



BBS



PRIME

The PRIME™ line of BBs is designed to provide you with all kinds of quality BBs, from regular to BIO to Tracer. All of this is packaged in convenient dispenser bags, jars for high-weight BBs, or bottles, among others.

STANDARD BBS

0.20g	0.23g	0.25g	0.28g	0.30g	0.32g
-------	-------	-------	-------	-------	-------

BIO BBS

0.20g	0.23g	0.25g	0.28g	0.30g	0.32g
-------	-------	-------	-------	-------	-------

HEAVY BBS

0.36g	0.40g	0.43g	0.45g	0.48g	
-------	-------	-------	-------	-------	--

HEAVY BIO BBS

0.36g	0.40g	0.43g	0.45g	0.48g
-------	-------	-------	-------	-------

TRACER BBS

0.20g	0.25g	0.28g
-------	-------	-------

TRACER BIO BBS

0.20g	0.25g	0.28g
-------	-------	-------

EDGE

In the wide range of EDGE™ BB's, you will find the highest quality ammunition for airsoft replicas manufactured by real experts in the field of precision BB's - the Taiwanese company BLS. Specna Arms EDGE™ by BLS BB's are available in weights from 0.20g to 0.50g in the standard, biodegradable, and Tracer versions.

STANDARD BBS

0.20g	0.23g	0.25g	0.28g	0.30g	0.32g
-------	-------	-------	-------	-------	-------

BIO BBS

0.20g	0.23g	0.25g	0.28g	0.30g	0.32g
-------	-------	-------	-------	-------	-------

HEAVY BBS

0.36g	0.40g	0.43g	0.45g	0.48g	
-------	-------	-------	-------	-------	--

HEAVY BIO BBS

0.36g	0.40g	0.43g	0.45g	0.48g
-------	-------	-------	-------	-------

TRACER BBS

0.20g	0.25g	0.28g
-------	-------	-------

TRACER BIO BBS

0.20g	0.25g	0.28g
-------	-------	-------





EDGE

ULTRA

The new EDGE Ultra BBs are designed for those seeking outstanding precision in frequent skirmishes. They are the choice for the most dedicated players. With Edge Ultra, incredible accuracy can be achieved at an attractive price.

Primarily recommended for assault rifles and MidCap magazines, they excel in most airsoft replicas. If you often engage in intense skirmishes, Edge Ultra BBs will provide the reliability and precision you deserve.

STANDARD BBS

0.20g	0.23g	0.25g	0.28g	0.30g	0.32g
-------	-------	-------	-------	-------	-------

TRACER BIO BBS

0.20g	0.25g	0.28g	0.30g	0.32g
-------	-------	-------	-------	-------

BIO BBS

0.20g	0.23g	0.25g	0.28g	0.30g	0.32g
-------	-------	-------	-------	-------	-------



By launching the ONE line of BBs, the brand is expanding its range of BBs with a line of professional ammunition for airsoft replicas. The ONE BBs are perfect as everyday airsoft ammunition. They are perfect for both standard and precision barrels. The Specna Arms ONE BB's are available in weights from 0.20g to 0.40g in the standard, biodegradable, and Tracer versions.

STANDARD BBS

0.20g	0.23g	0.25g	0.28g	0.30g	0.32g
-------	-------	-------	-------	-------	-------

BIO BBS

0.20g	0.23g	0.25g	0.28g	0.30g	0.32g
-------	-------	-------	-------	-------	-------

HEAVY BBS

0.36g	0.40g
-------	-------

HEAVY BIO BBS

0.36g	0.40g
-------	-------

TRACER BBS

0.20g	0.25g
-------	-------





**SPECNA[®]
ARMS**



The Specna Arms CORE™ line are the perfect BB's for standard Hi-Cap magazines and Green Gas grenades. Due to their low price, Specna Arms CORE BBs are an ideal choice for support weapons that consume a lot of ammunition.

STANDARD BBS

0.20g	0.23g	0.25g	0.28g	0.30g	0.32g
-------	-------	-------	-------	-------	-------

BIO BBS

0.20g	0.23g	0.25g	0.28g	0.30g	0.32g
-------	-------	-------	-------	-------	-------



